

# G10-43A

TELEHANDLER



## Performance

|                             |            |           |
|-----------------------------|------------|-----------|
| Rated Capacity              | 10,000 lb  | 4,536 kg  |
| Maximum Lift Height         | 43 ft      | 13.1 m    |
| Load at Max Height          | 7,000 lb   | 3,175 kg  |
| Maximum Forward Reach       | 30 ft 6 in | 9.3 m     |
| Load at Max Reach           | 2,300 lb   | 1,043 kg  |
| Frame Leveling              | 10°        |           |
| Lift Speed (boom retracted) |            |           |
| Up                          | 11 sec     |           |
| Down                        | 11 sec     |           |
| Boom Speed                  |            |           |
| Extended                    | 15 sec     |           |
| Retracted                   | 16 sec     |           |
| Top Travel Speed (4-Speed)  | 20 mph     | 32 kph    |
| Drawbar Pull (loaded)       | 19,200 lb  | 8,709 kg  |
| Outside Turning Radius      | 12 ft      | 3.67 m    |
| Operating Weight            | 27,380 lb  | 12,419 kg |

## Standard Specifications

### Engine

|                           |                 |        |
|---------------------------|-----------------|--------|
| Make and Model            | Cummins QSB3.3L |        |
| No. of Cylinders          | 4               |        |
| Displacement              | 202 cu in.      | 3.3 L  |
| Gross Power Basic         | 100 hp          | 75 kW  |
| Maximum Torque @ 1500 rpm | 306 lb-ft       | 414 Nm |
| Fuel Tank Capacity        | 38 gal          | 144 L  |

### Transmission

Powershift with torque converter.  
4-speed forward and 3-speed reverse.

### Axles

Trunnion mounted planetary steer axles.  
Integral steer cylinder.  
High bias limited slip differential on front axle.

### Brakes

Service brakes are inboard wet disc brake on front and rear axles.  
Parking brakes are wet disc spring-applied hydraulic release on front axle.

### Tires

|          |                      |
|----------|----------------------|
| Standard | 400/75-28            |
| Optional | Foam-Filled or Solid |

### Cab

Certified ROPS/FOPS structure  
Adjustable seat  
Horn

### Steering 4-Wheel

Power steering with manual backup.  
Operator selectable 4-wheel circle, 4-wheel crab, 2-wheel front.

### Instruments

|                           |                   |
|---------------------------|-------------------|
| Volt meter                | Temperature gauge |
| Hourmeter                 | Fuel gauge        |
| Engine oil pressure gauge |                   |

## Hydraulic System-Implement

|   |        |         |
|---|--------|---------|
| Capacity  | 40 gal | 151.4 L |
| Load sense piston pump.<br>Auxiliary hydraulics used for all attachments equipped with cylinders or other hydraulic components. |        |         |

## Accessories & Options

- Enclosed Cab
- Auxiliary Electrics
- Road Lights
- Air Conditioning
- Work Lights
- Rotating Beacon
- Pintle Hook
- Brick Guard
- Arctic Package
- Hydraulic Quick Switch

## Attachments

|   |   |  |
|---|---|--|
| Standard Carriage   | 50 in.<br>60 in.<br>72 in.  | 1.3 m<br>1.5 m<br>1.8 m  |
| Side-Tilt Carriage  | 50 in.<br>60 in.<br>72 in.  | 1.3 m<br>1.5 m<br>1.8 m  |
| Swing 90° Carriage  | 72 in.  | 1.8 m  |
| Dual Fork Positioning Carriage                              |   |  |
| Side-Shift Carriage   | 50 in.  | 1.3 m  |
| Tower   | 8 ft  | 2.4 m  |
| * For use on 50 in. (1.3 m) Standard or Side-Tilt Carriage* |   |  |
| Pallet Forks  | 2.36 in. x 4 in. x 48 in.<br>2.36 in. x 5 in. x 48 in.<br>2.00 in. x 6 in. x 72 in. | 60 mm x 102 mm x 1.2 m<br>60 mm x 127 mm x 1.2 m<br>51 mm x 152 mm x 1.8 m |
| Lumber Forks  | 1.75 in. x 7 in. x 60 in.<br>2.36 in. x 6 in. x 60 in.                              | 44 mm x 178 mm x 1.5 m<br>60 mm x 152 mm x 1.5 m                           |
| Cubing Forks  | 2 in. x 2 in. x 48 in.  | 51 mm x 51 mm x 1.2 m  |
| Fork Extensions   | 90 in.  | 2.3 m  |
| Material Bucket   | 72 in., 1.0 cu yd<br>96 in., 1.5 cu yd<br>102 in., 2.0 cu yd                        | 1.8 m, 0.76 m³<br>2.4 m, 1.15 m³<br>2.6 m, 1.53 m³                         |
| Grapple Bucket  | 96 in., 1.75 cu yd  | 2.4 m, 1.34 m³   |
| Truss Boom  | 12 ft, 2,000 lb<br>15 ft, 2,000 lb<br>12 ft with winch, 2,000 lb                    | 3.7 m, 907 kg<br>4.6 m, 907 kg<br>3.7 m, 907 kg                            |
| Fork Mounted Work Platform                                  | 8 ft, 1,000 lb Capacity   | 2.4 m, 455 kg Capacity   |
| Lifting Hook  |   |  |

\* Requires auxiliary electrics

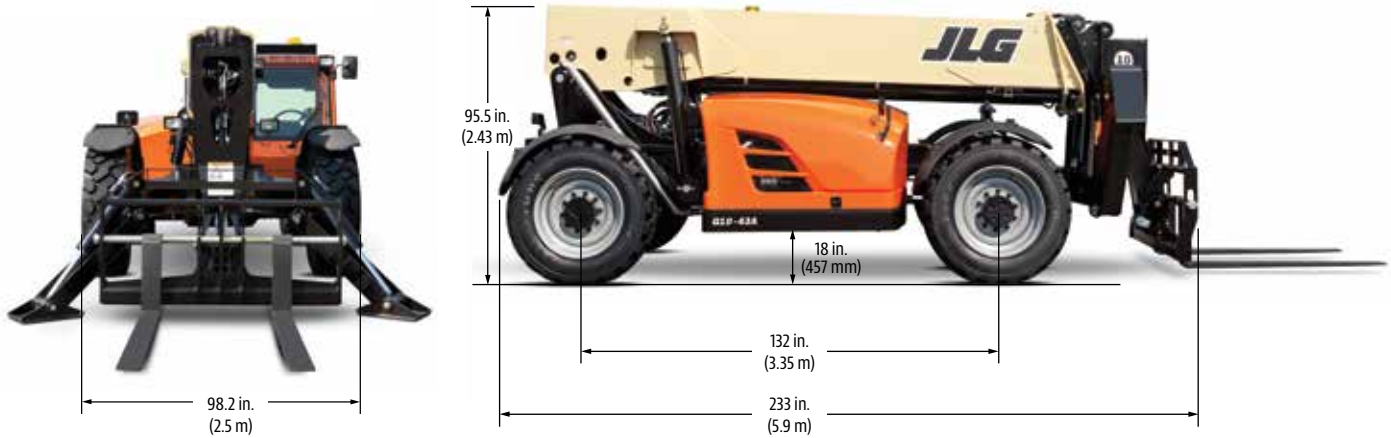
# G10-43A

TELEHANDLER

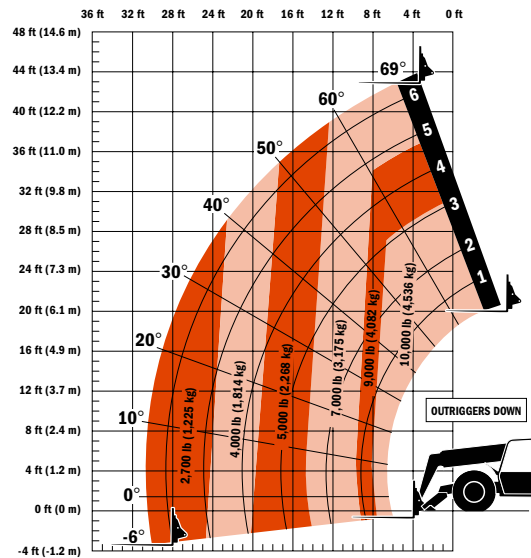
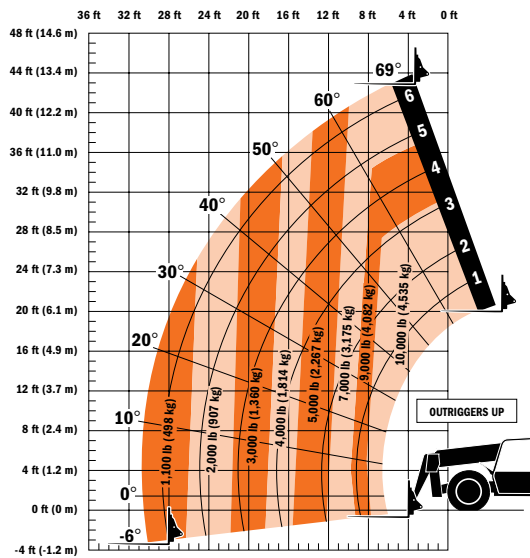


## Dimensions

All dimensions are approximate.



## Load Chart



## The JLG "1 & 5" Warranty

JLG Industries, Inc. backs its products with its exclusive "1 & 5" Warranty. We provide coverage on all products for one (1) full year, and cover all specified major structural components for five (5) years. Due to continuous product improvements, we reserve the right to make specification and/or equipment changes without prior notification. This machine meets or exceeds applicable OSHA Regulations in 29 CFR 1910.67, 29 CFR 1926.453, ANSI A92.5-2006, and CSA Standard CAN3-B354.2-M82, as originally manufactured for intended applications.

Form No.: SS-G10-43A  
 Part No.: 3132230  
 R031404  
 Printed in USA



**JLG Industries, Inc.**  
 1 JLG Drive  
 McConnellsburg, PA 17233-9533  
 Telephone 717-485-5161  
 Toll-free in US 877-JLG-LIFT  
 Fax 717-485-6417  
[www.jlg.com](http://www.jlg.com)

**An Oshkosh Corporation Company**